

## WHAT IS THE GMGY IMPLEMENTATION PLAN?

Goodness Me, Goodness You! (GMGY) is the **Patron's Curriculum for Community National Schools (CNSs)**. CNSs are primary schools under the Patronage of the Education and Training Boards (ETBs). GMGY was designed by the National Council for Curriculum and Assessment (NCCA) and was launched in the Department of Education and Skills (DES) in October, 2018.

To support CNSs with the teaching and learning of GMGY, Education and Training Boards Ireland (ETBI), in conjunction with the GMGY Coordinators' and CNS Principals' Network Groups, developed an Implementation Plan for the curriculum. This implementation plan is patron approved. Its aims are to:

- increase schools' **appreciation** of the patrons' curriculum as a discrete curricular area as well as an essential element informing and supporting the multi-denominational ethos of Community National Schools
- begin to develop schools' **understanding** of the vision and aims of the curriculum, elements and outcomes of each strand as well as relevant methodologies and pedagogies underpinning teaching and learning in GMGY
- build schools' **confidence and competence** to collaboratively plan for and teach the curriculum through discrete GMGY lessons as well as integrate GMGY into other curricular areas, across the school environment, and reflect on learning from their practice

## HOW WILL THE GMGY IMPLEMENTATION PLAN OPERATE?

There are a variety of interdependent components to the GMGY Implementation Process. These include:

- engagement in **professional learning experiences**
- **preparation** for teaching and learning in the patrons' curriculum
- facilitation of **teaching and learning** in GMGY and
- **reflection** on professional practice and children's learning experiences



CNS Teachers engage with these components **formally** through a structured professional learning process as well as through **informal**, ongoing opportunities for professional learning, preparation, teaching and learning as well as reflection.

## HOW DO TEACHERS ENGAGE IN GMGY IMPLEMENTATION IN A FORMAL, STRUCTURED WAY?



Through the **structured professional learning process**, Community National Schools engage in an introductory webinar on *GMGY* and four "**rounds**", or periods of focused implementation.

Each "round" takes place over a single school term and will provide schools with the opportunity to focus on one of the four strands of *GMGY*. Each "round" consists of 4 key steps which are illustrated above. These include:

1. **A GMGY Webinar** on one of the four strands
2. An opportunity to **prepare** for teaching and learning in that strand
3. Time to **teach** new pedagogies, methodologies, approaches
4. An opportunity to **reflect** on professional learning and children's learning experiences from the process

## HOW DO TEACHERS ENGAGE IN THE IMPLEMENTATION PROCESS IN A MORE INFORMAL, ONGOING WAY?

It is recognised that CNS teachers also engage in *GMGY* Implementation in an **informal**, ongoing fashion. Examples of ways teachers might engage with the implementation of the patrons' curriculum in this sense are outlined below.

Both structured and ongoing engagement in the four aforementioned components of *GMGY* Implementation (professional learning, preparation, teaching and learning, and reflection) aim to increase teachers' appreciation, understanding, confidence and competence in the patrons' curriculum and ultimately facilitate meaningful and effective learning experiences for children.



## WHAT CAN CNS TEACHERS DO TO SUPPORT THE IMPLEMENTATION OF GMGY?

1

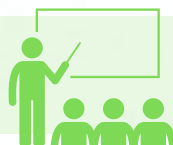
### STAY INFORMED



- Review the *GMGY* Yearly/Termly Calendar for Upcoming Events
- Keep an eye on the *GMGY* section of the CNS and ETBI websites
- Register for the CNS Newsletter

2

### ENGAGE



- Participate in school-based professional learning experiences including *GMGY* Webinars, preparation and reflection sessions
- Participate in other professional learning experiences including *GMGY* Teach-Meets, CNS Pop-Ups and other external events

3

### LIAISE



- Touch-base with your schools' *GMGY* Coordinator to provide feedback or seek clarification
- Discuss your experience of *GMGY* with other members of staff during staff and/or team meetings as well as informally throughout the year

## WHAT PROFESSIONAL LEARNING EXPERIENCES ARE AVAILABLE TO TEACHERS THROUGH THE IMPLEMENTATION PROCESS?

### GMGY WEBINARS

*GMGY* Webinars are 1 hour professional learning experiences which provide CNS Teachers with an introduction to *GMGY* and each of its four strands.

### GMGY PREPARATION & REFLECTION SESSIONS

Following each school's engagement with a *GMGY* Webinar, *GMGY* Coordinators follow-up with two professional development sessions through which schools unpack webinar content locally. The first of these is a preparation session during which teachers collectively prepare to implement a specific strand/element with their classes. Once teaching and learning has taken place, schools then engage in a reflection session to share their learning from the webinar, preparation and teaching of the strand.

### GMGY TEACH MEETS

Each term, ETBI will host two Teach-Meets to support teachers with *GMGY*, one for stages 1 and 2 and another for stages 3 and 4. The meetings, which can be attended on an opt-in basis, will be informal, teacher-led initiatives and will aim to provide a space for CNS teachers to share best practice in *GMGY*.

### CNS POP-UPS

Pop-Ups are once-off professional learning experiences exploring specific pedagogies, methodologies and approaches to support teaching and learning in *GMGY*. CNS staff can attend Pop-Ups on an opt-in basis.